

# THE HOMES ON JACKSON

ST. PETERSBURG, FLORIDA



# DISCLAIMER

## Offering Memorandum Disclaimer:

This Offering Memorandum has been prepared by Verdad Commercial Real Estate Services LLC for informational purposes only. It is not intended to be all-inclusive or to contain all the information that a prospective investor may desire in investigating the property. The information contained herein has been obtained from sources deemed reliable; however, no warranty or representation, expressed or implied, is made as to the accuracy or completeness of the information.

Prospective investors are encouraged to conduct their own independent investigations and analyses of the property, market conditions, financial projections, and other relevant factors, and to seek appropriate professional advice regarding legal, tax, and financial implications before making any investment decisions.

Offers to purchase the property will only be made through written documentation and shall be submitted to Verdad Commercial Real Estate Services LLC directly. Verdad Commercial Real Estate Services retains the exclusive and irrevocable right and authority to sell the property contained herein.

Verdad Commercial Real Estate Services reserves the right to amend or replace the information contained herein at any time without notice. This Offering Memorandum may not be reproduced or distributed, in whole or in part, without the prior written consent of Verdad Commercial Real Estate Services LLC.

By accepting this Offering Memorandum, the recipient agrees to be bound by the foregoing limitations and any other confidentiality agreements supplied with this document.

© 2024 Verdad Commercial Real Estate Services, LLC

# THE HOMES ON JACKSON STREET

## ST. PETERSBURG, FL

### Property Description:

#### St. Petersburg Investment Opportunity: Charming Single-Family Home and Neighboring Triplex

Discover an exceptional opportunity to own a versatile property portfolio in the vibrant and growing city of St. Petersburg, Florida. This offering includes a charming single-family home and a neighboring triplex, all located in the Historic Uptown neighborhood.

#### 1. 1040 9th Ave N, St. Petersburg, FL

- Single-Family Home
- Unit Mix: 3 Bed / 1 Bath
- Size: 1,350 Sq. Ft.

This beautiful craftsman single-family home boasts a spacious 3-bedroom, 1-bath layout, perfect for a growing family or as a rental property for long-term tenants. With 1,350 square feet of living space, the home features an inviting interior with plenty of room for entertaining, cozy bedrooms, and an ideal mix of vintage charm and modern updates. The property also includes a large yard, ideal for outdoor activities, gardening, or future development potential.

#### 2. 1044 9th Ave N, St. Petersburg, FL

##### Duplex

Unit 1: 1 Bed / 1 Bath, 506 Sq. Ft.

Unit 2: 1 Bed / 1 Bath, 350 Sq. Ft. (1040 1/2 9th Ave N)

Located behind to the single-family home, this duplex offers an incredible income-generating opportunity. Each unit is a 1-bedroom, 1-bath apartment 350 to 506 square feet. These units are perfect for single professionals, couples, or retirees looking for a cozy and affordable place to call home. The triplex is ideal for an investor seeking steady rental income or a generational family living arrangement.

#### 3. 834 Jackson St. N, St. Petersburg, FL

- Single-Family Home
- Unit Mix: 2 Bed / 1 Bath
- Size: 886 Sq. Ft.

# THE HOMES ON JACKSON STREET ST. PETERSBURG, FL

## Property Description:

Directly nextdoorr, this 2-bedroom, 1-bath single-family home offers an additional investment opportunity with 886 square feet of living space. This cozy home is ideal for a small family or as a rental property. Located in a quiet neighborhood, it offers easy access to local parks, schools, and the bustling downtown area of St. Pete.

## Key Highlights:

- **Prime Location:** Situated in the heart of St. Petersburg, this property portfolio offers convenient access to downtown, the beautiful Gulf beaches, major highways, and local attractions.
- **Income Potential:** With multiple units across two properties, this is an ideal investment for those seeking reliable rental income and long-term appreciation.
- **Versatility:** Whether you're an investor looking to expand your portfolio or a homeowner seeking rental income from neighboring units, this opportunity offers endless possibilities.

Don't miss out on this chance to own a piece of St. Petersburg's thriving real estate market. Contact us today to schedule a viewing and explore the potential of these fantastic properties.

[CLICK HERE FOR INTERIOR 3-D WALK THRU OF 834 JACKSON ST NORTH](#)



## AREA OVERVIEW: ST. PETERSBURG, FL



St. Petersburg, often referred to as “St. Pete,” is a vibrant coastal city located on the Pinellas County. Known for its stunning waterfront, cultural diversity, and vibrant arts scene, St. Petersburg offers residents and visitors alike a unique blend of urban sophistication and laid-back Florida charm.

St. Petersburg is renowned for its thriving arts scene and cultural institutions. The city’s downtown waterfront is home to the Salvador Dali Museum, housing the largest collection of Dali’s works outside of Spain, and the Museum of Fine Arts, featuring a diverse collection of art spanning centuries and continents. The Mahaffey Theater hosts a variety of performances, from Broadway shows to symphony concerts, while the Chihuly Collection showcases the mesmerizing glass art of Dale Chihuly.

The waterfront is the heart of St. Petersburg’s recreational and leisure activities. Spanning over seven miles, the St. Petersburg Pier offers stunning views of Tampa Bay and provides a plethora of amenities, including dining options, shopping boutiques, and recreational activities like fishing and boat rentals. Nearby parks such as North Straub Park and Vinoy Park offer green spaces for picnics, leisurely strolls, and outdoor events throughout the year.



## AREA OVERVIEW: ST. PETERSBURG, FL

St. Petersburg boasts a diverse culinary scene, with a wide array of dining options to suit every palate. From upscale waterfront restaurants serving fresh seafood to trendy cafes and food trucks offering international cuisine, there's no shortage of culinary delights to discover. After dark, the city comes alive with a vibrant nightlife, with bars, breweries, and live music venues scattered throughout downtown and the surrounding neighborhoods.

Outdoor enthusiasts will find plenty to love in St. Petersburg's abundant recreational opportunities. The city's mild climate allows for year-round outdoor activities such as boating, kayaking, paddleboarding, and fishing. The Pinellas Trail, a 38-mile-long linear park, offers scenic trails for walking, jogging, and biking, while nearby beaches like St. Pete Beach and Fort De Soto Park provide pristine white sands and turquoise waters for sunbathing and swimming.

With its rich history, cultural diversity, and stunning waterfront, St. Petersburg, FL, offers residents and visitors a vibrant and dynamic cityscape with endless opportunities for exploration and enjoyment. Whether indulging in world-class art, savoring delicious cuisine, or soaking up the sun on its beautiful beaches, St. Petersburg captivates the hearts of all who experience its warmth and charm.





## AREA OVERVIEW: HISTORIC UPTOWN NEIGHBORHOOD



The Historic Uptown Neighborhood in St. Petersburg, Florida, is a vibrant and eclectic community known for its historic charm, diverse culture, and thriving arts scene. Situated just north of downtown St. Petersburg, this neighborhood offers a unique blend of residential tranquility and urban excitement.

One of the defining features of the Historic Uptown Neighborhood is its diverse architecture, with an array of historic homes, bungalows, and apartment buildings lining its streets. Architectural styles range from Victorian and Craftsman to Mediterranean Revival and Mid-Century Modern, reflecting the neighborhood's evolution over time. Residents take pride in preserving the character and integrity of their properties, contributing to the area's unique charm.

Residents of the Historic Uptown Neighborhood enjoy easy access to a variety of amenities and attractions. The neighborhood boasts several parks, bike trails, and community gardens, providing opportunities for outdoor recreation and relaxation.

With its historic ambiance, vibrant culture, and strong sense of community, the Historic Uptown Neighborhood of St. Petersburg, FL, offers residents a unique blend of urban sophistication and small-town charm. Whether exploring its historic streets, attending cultural events, or connecting with neighbors, this eclectic enclave provides an enriching and dynamic living experience for all who call it home.



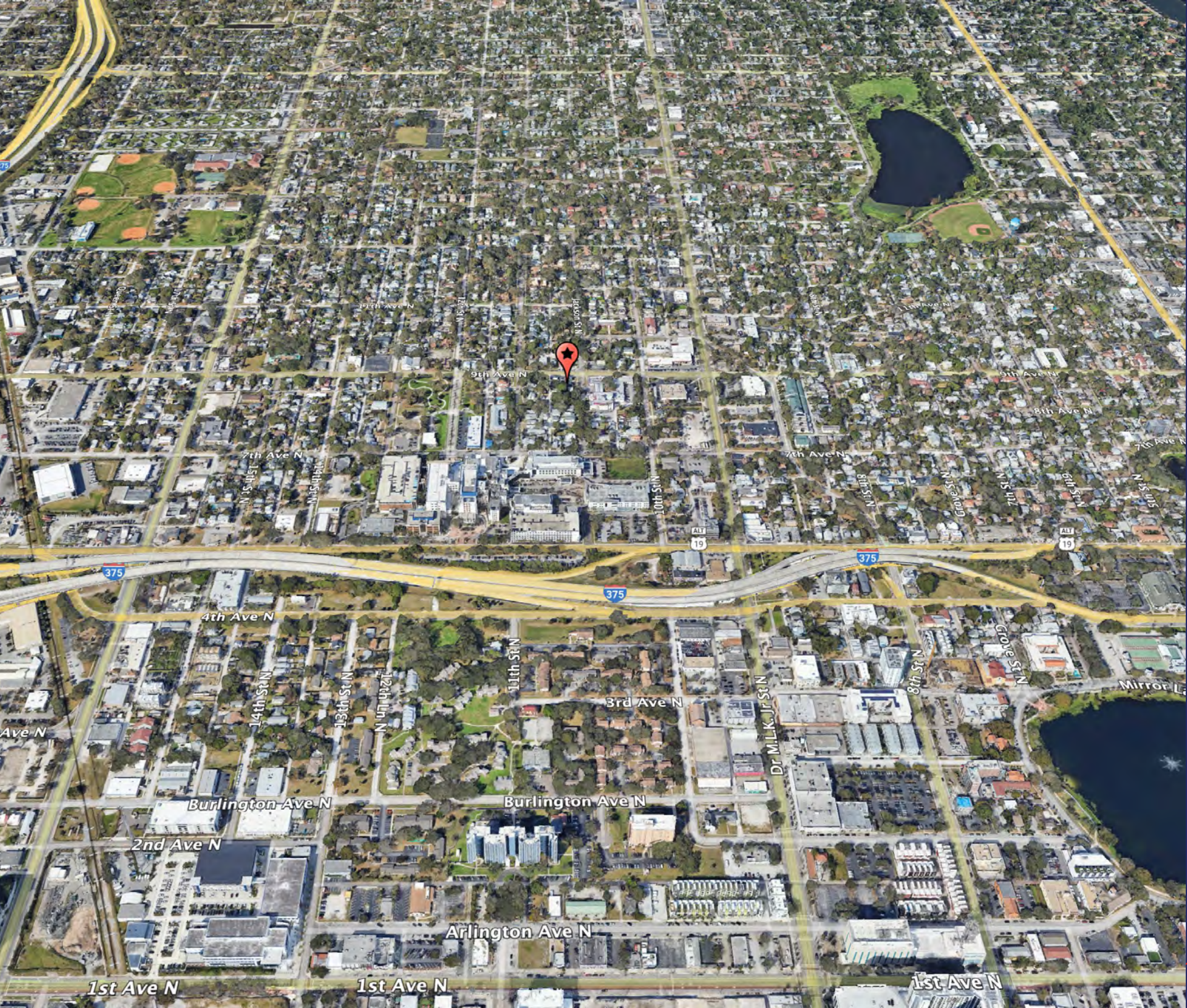
BUILDING NAME	NINTH AVE NORTH
ADDRESS	1040 9TH AVE N
APN	13-31-16-72504-001-0010
NEIGHBORHOOD	HISTORIC UPTOWN
SQUARE FEET	1880
MASONRY	FRAME/BLOCK
YEAR BUILT	1925
UNIT MIX	SFH - 3BED/1BATH TWO - 1BED/1BATH
NUMBER OF UNITS	THREE
ACRES	0.15
AMENITIES	GARAGE/PARKING
NOTES	





BUILDING NAME	JACKSON STREET
ADDRESS	834 JACKSON ST.
APN	13-31-16-72504-001-0020
NEIGHBORHOOD	HISTORIC UPTOWN
SQUARE FEET	886
MASONRY	FRAME
YEAR BUILT	1918
UNIT MIX	SFH - 2BED/1BATH
NUMBER OF UNITS	ONE
ACRES	0.15
AMENITIES	YARD/GARAGE/PARKING
NOTES	





PROPERTY OVERVIEW: THE HOMES ON JACKSON STREET



PROPERTY OVERVIEW: THE HOMES ON JACKSON STREET





PICTURES: EXTERIOR



Back Building



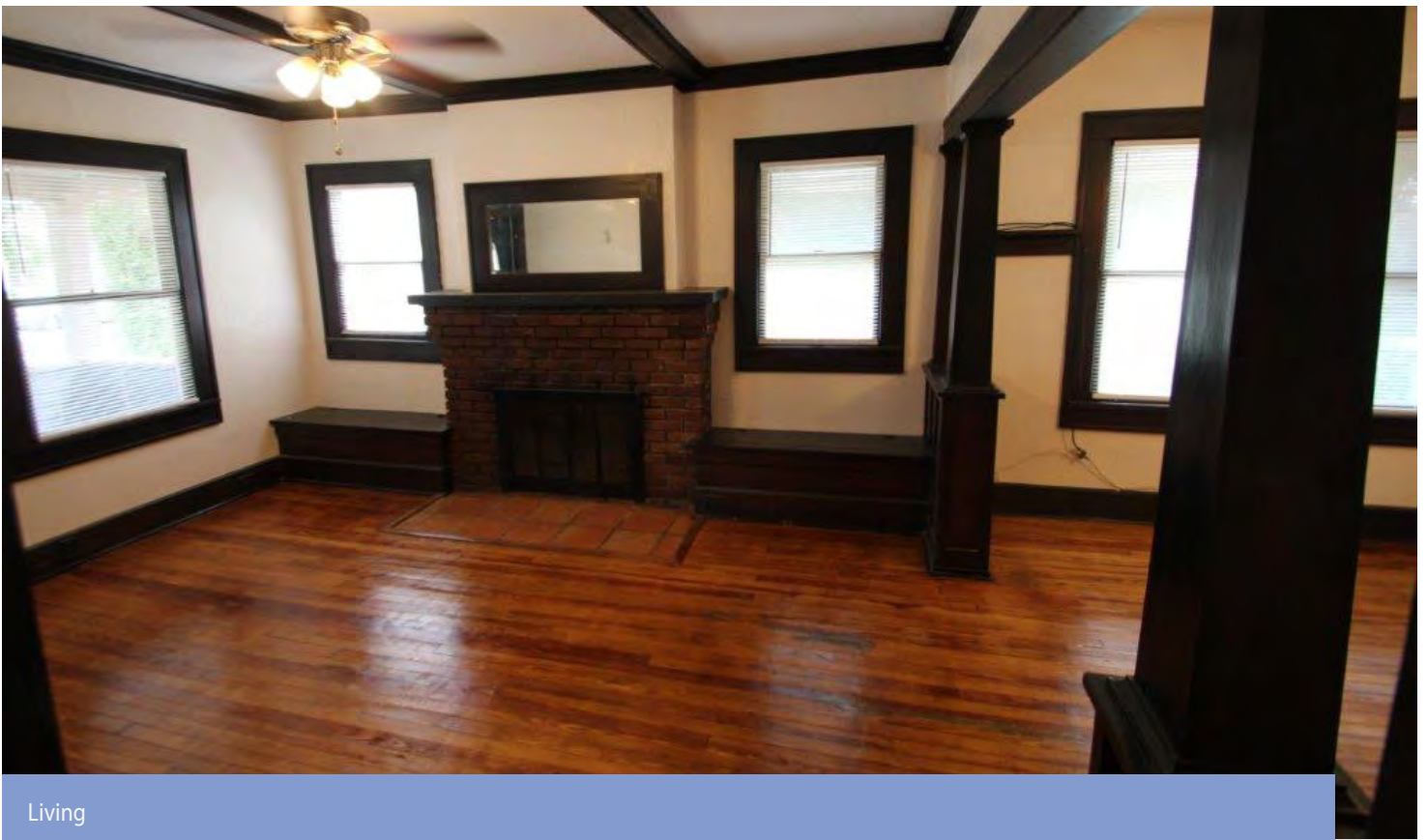
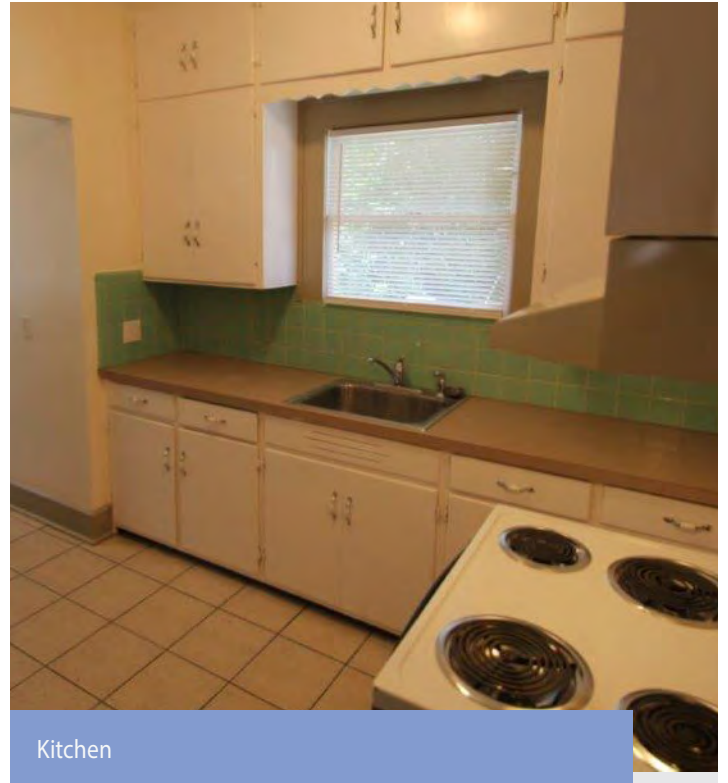
1044 9th Ave N



Jackson



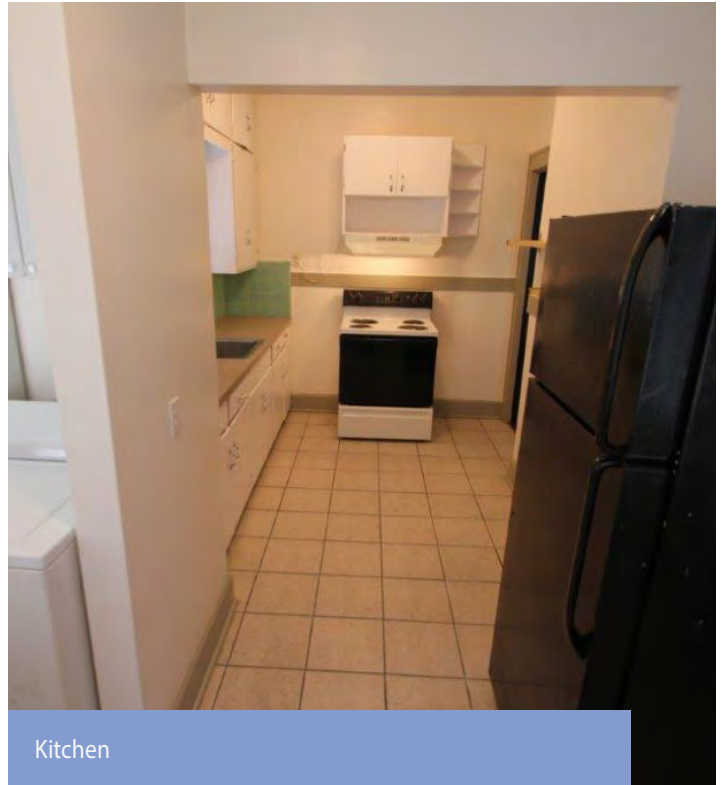
## PICTURES: INTERIOR



PICTURES: HISTORIC UPTOWN



Bedroom



Kitchen



Living



# THE HOMES ON JACKSON STREET ST. PETERSBURG, FL



## PRICING - EXPENSES

LIST PRICE	\$866,000	
PRICE PER SQUARE FOOT	\$279	
LOT SIZE	0.32 ACRES	
EXPENSES	CURRENT	ESTIMATED NEW
PROPERTY TAXES (EST NEW):	\$9,731	\$10,500
INSURANCE ESTIMATE	\$5,630	\$6,500
LAWN	\$1,200	\$1,200
MAINT & REPAIR	\$2,600	\$2,600
CONTRACT SERVICES	\$1,350	\$1,350
WST	\$6,700	\$6,700
GAS	\$150	\$150
ELECTRIC	\$600	\$600
RESERVES	\$1,000	\$1,000
MISC	\$2,500	\$2,500
TOTAL ANNUAL EXPENSES:	\$31,461	\$33,100
EXP PER SQUARE FOOT	\$10.17	\$10.71
TOTAL ANNUAL RENTAL INCOME	\$81,600	\$102,600



## RENT ROLL - DESCRIPTION

ADDRESS	834 JACKSON ST
TYPE	SFH - COTTAGE
BED/BATH	2BED / 1BATH
CURRENT RENT	\$2,100
RENT PER SQUARE FOOT	\$2.31
AMENITIES	YARD/ PARKING/SHED

ADDRESS	1040 9TH AVE N
TYPE	SFH - COTTAGE
BED/BATH	3BED / 1BATH
CURRENT RENT	\$2,200
RENT PER SQUARE FOOT	\$0.96
AMENITIES	COURTYARD

ADDRESS	1040 1/2 9TH AVE N
TYPE	APARTMENT
BED/BATH	1BED / 1BATH
CURRENT RENT	\$1,200
RENT PER SQUARE FOOT	\$3.00
AMENITIES	GARAGE

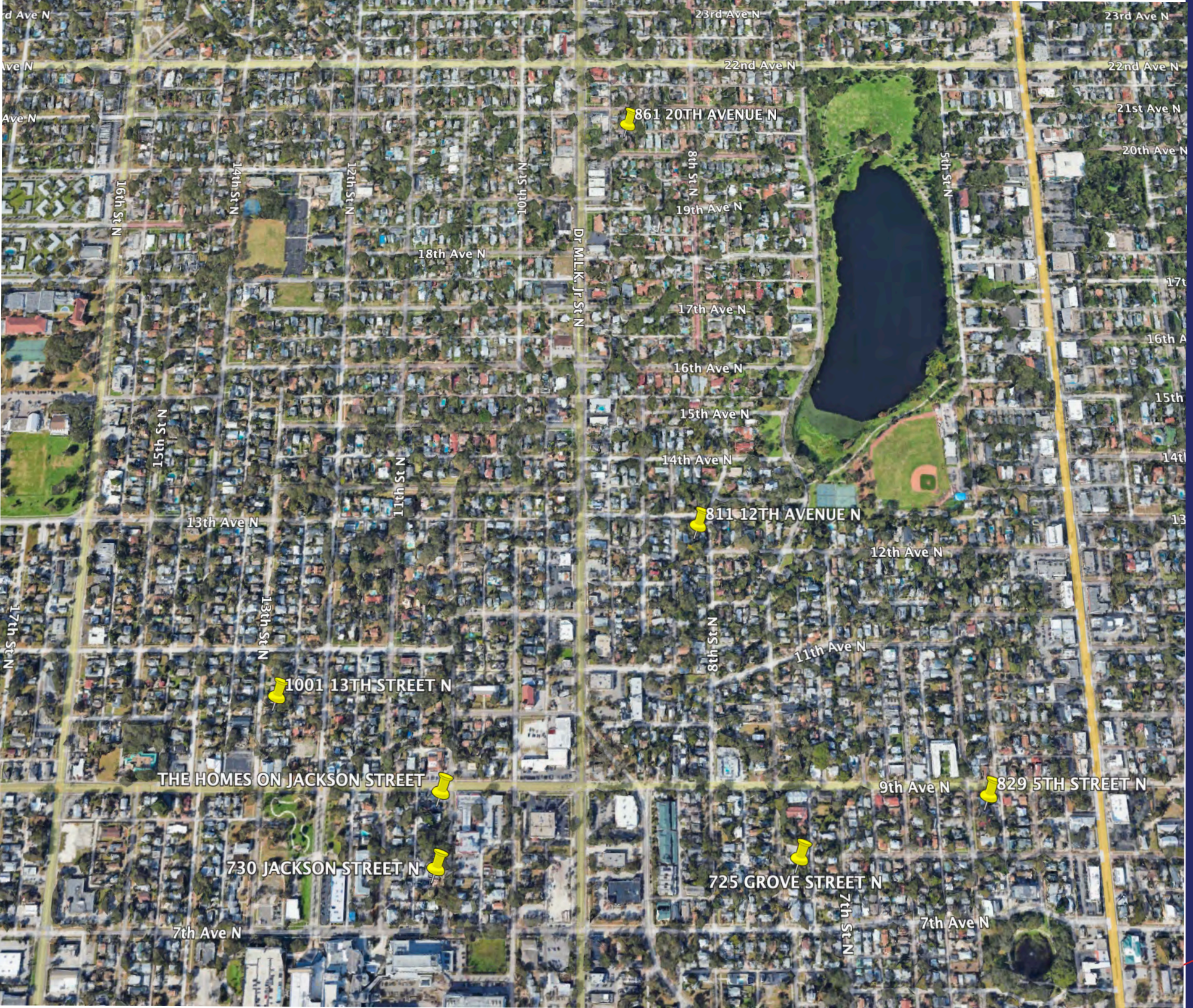
ADDRESS	1044 9TH AVE N
TYPE	APARTMENT
BED/BATH	1BED / 1BATH
CURRENT RENT	\$1,300
RENT PER SQUARE FOOT	\$2.37
AMENITIES	OFF STREET PARKING



# THE HOMES ON JACKSON STREET ST. PETERSBURG, FL

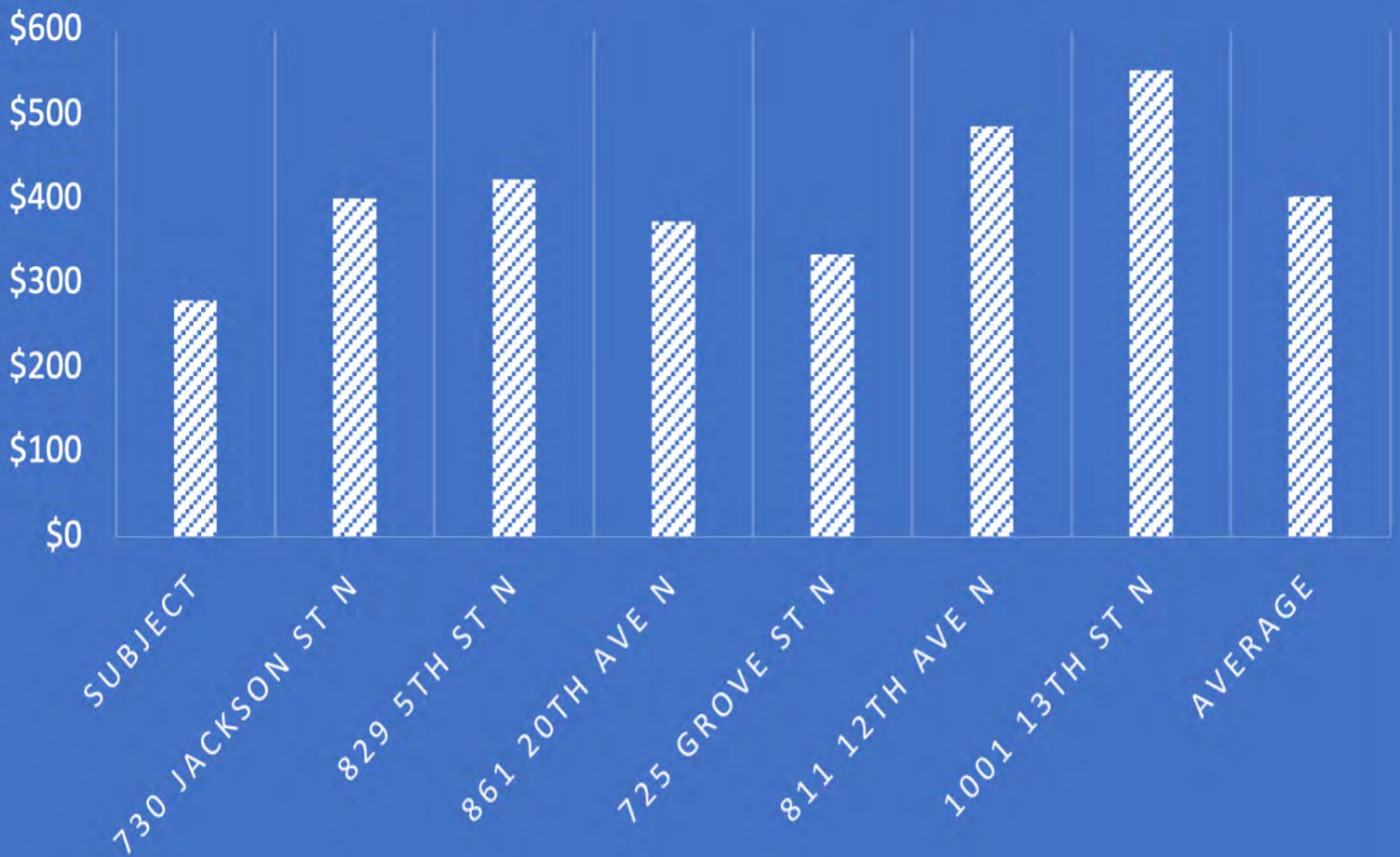








## PRICE PER SQUARE FOOT





## SALES COMPS



730 JACKSON ST N  
ST PETERSBURG, FL

PRICE	\$950,000
SQUARE FEET	2,372
PRICE PER SF	\$401
TYPE	TRIPLEX
YEAR BUILT	1925
SALE DATE	DEC 2024

DESCRIPTION - TRIPLEX WITH BUNGALOW



829 5TH ST N  
ST. PETERSBURG, FL

PRICE	\$875,000
SQUARE FEET	2,070
PRICE PER SF	\$423
TYPE	QUAD
YEAR BUILT	1925
SALE DATE	APRIL 2025

DESCRIPTION - FOUR 1BED/1BATH UNITS



861 20TH AVE N  
ST. PETERSBURG, FL

PRICE	\$630,000
SQUARE FEET	1,743
PRICE PER SF	\$373
TYPE	DUPLEX
YEAR BUILT	1925
SALE DATE	APRIL 2025

DESCRIPTION - DUPLEX

## SALES COMPS



725 GROVE ST N  
ST. PETERSBURG, FL

PRICE	\$535,000
SQUARE FEET	1,554
PRICE PER SF	\$334
BED/BATH	2/2
YEAR BUILT	1925
SALE DATE	DEC 2024

DESCRIPTION - SFH



811 12TH AVE N  
ST. PETERSBURG, FL

PRICE	\$462,500
SQUARE FEET	952
PRICE PER SF	\$486
BED/BATH	2/1
YEAR BUILT	1920
SALE DATE	JUNE 2024

DESCRIPTION - SFH



1001 13TH ST N  
ST. PETERSBURG, FL

PRICE	\$565,000
SQUARE FEET	1,024
PRICE PER SF	\$552
BED/BATH	2/1
YEAR BUILT	1922
SALE DATE	MAR 2025

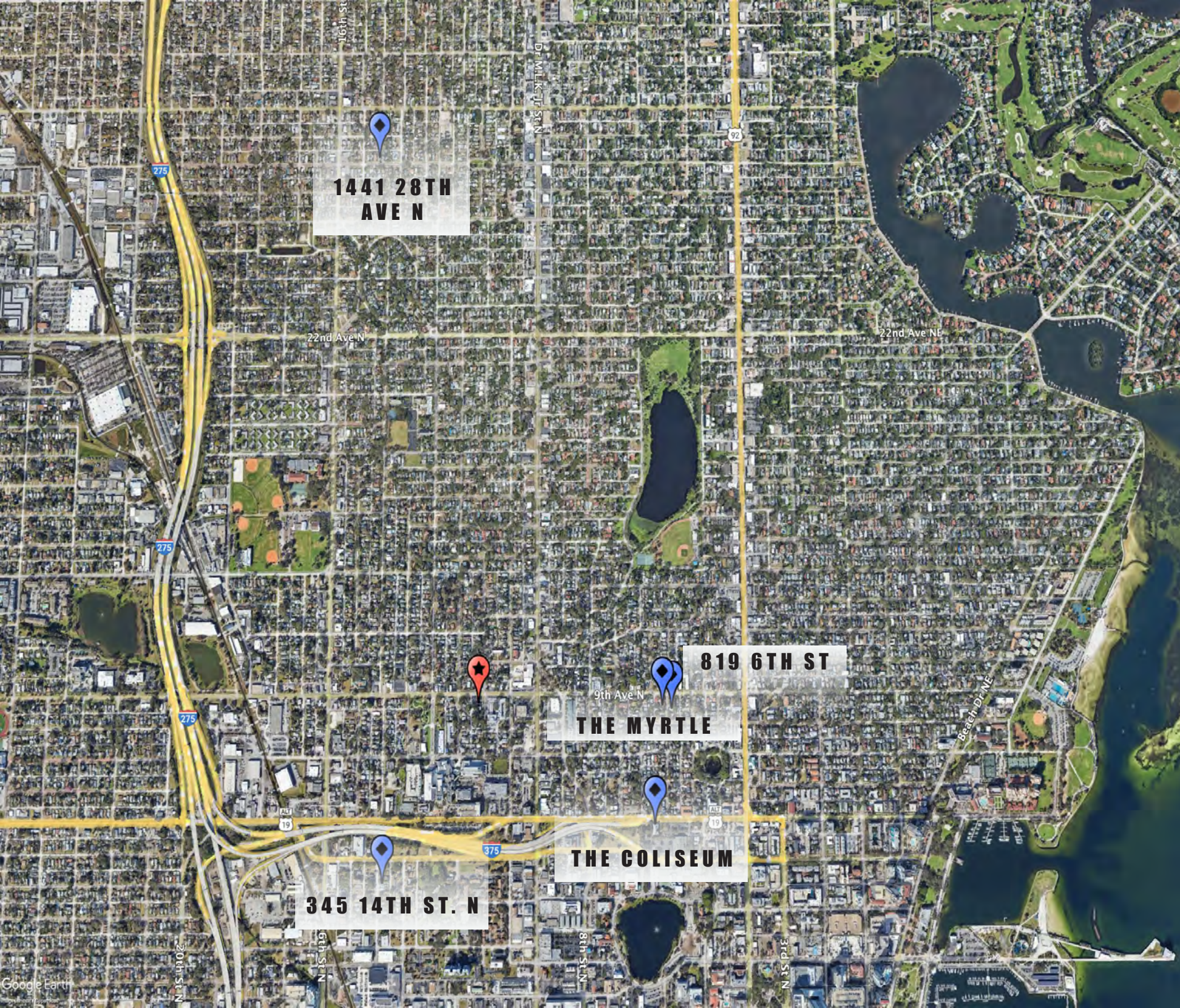
DESCRIPTION - SFH



# THE HOMES ON JACKSON STREET ST. PETERSBURG, FL







**1441 28TH  
AVE N**

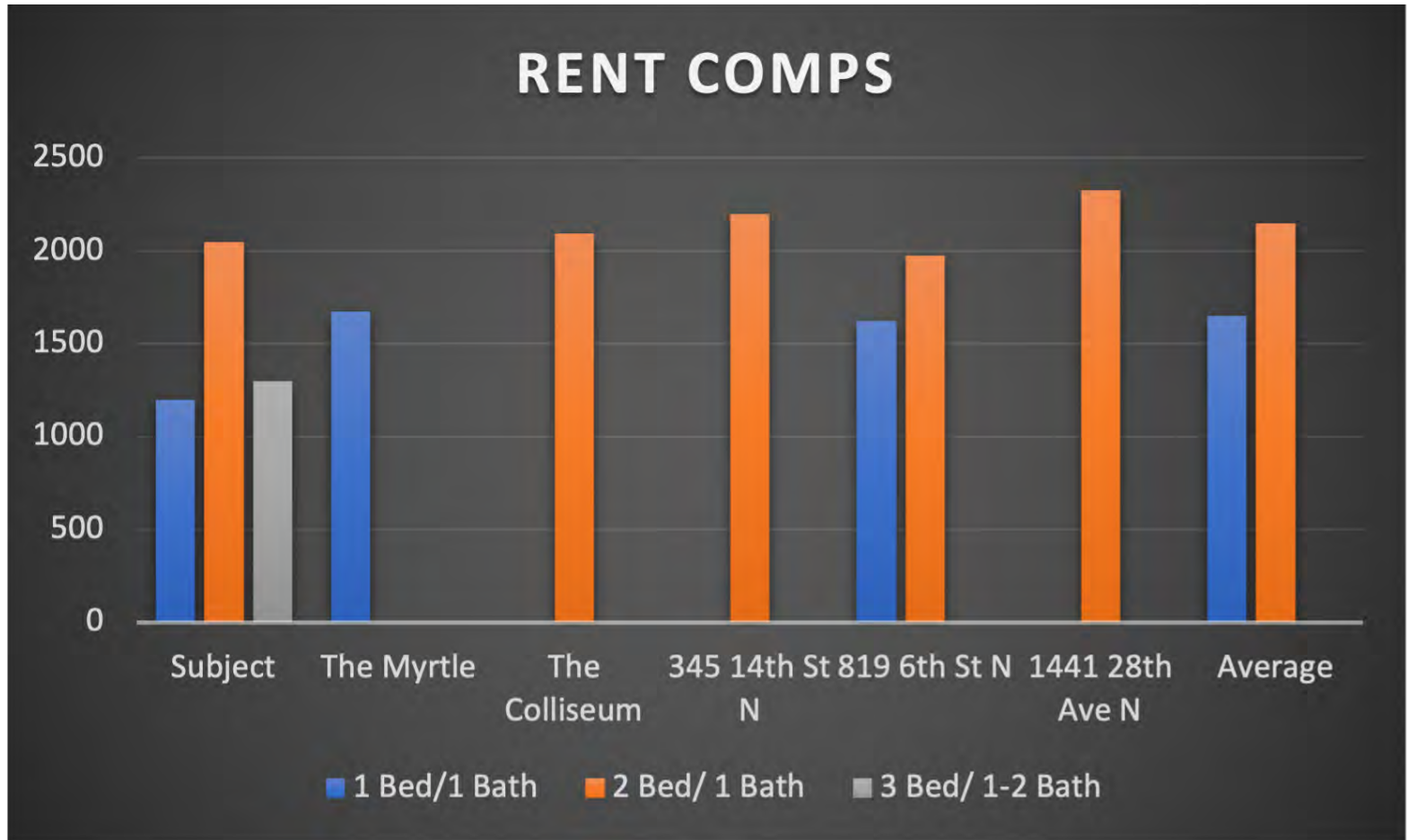
**819 6TH ST**

**THE MYRTLE**

**THE COLISEUM**

**345 14TH ST. N**









## SUBJECT PROPERTY

UNIT MIX	RENTS
1BED /1BATH	\$1,200-\$1,300
2BED/1BATH	\$2,100
3BED/1BATH	\$2,200
TOTAL UNITS	4

DESCRIPTION - WST INCLUDED IN RENT



THE MYRTLE  
824 6TH ST. N  
ST. PETERSBURG, FL

UNIT MIX	RENTS
1BED/1BATH	\$1,675
TOTAL UNITS	6
AMENITIES	PRVIATE PATIO

DESCRIPTION - UPDATED INTERIORS



THE COLISEUM APTS  
610 5TH AVE N  
ST. PETERSBURG FL

UNIT MIX	RENTS
2BED/1BATH	\$2,095
TOTAL UNITS	12
AMENITIES	PRIVATE PATIO

DESCRIPTION - WST PAID BY TENANT

## RENT COMPS



345 14TH ST. N  
ST. PETERSBURG, FL

UNIT MIX	RENTS
2BED/1BATH	\$2,200
TOTAL UNITS	SFH
AMENITIES	PARKING/LAUN- DRY

DESCRIPTION - WST PAID BY  
TENANT



819 6TH ST N  
ST. PETERSBURG, FL

UNIT MIX	RENTS
STUDIO	\$1,160
1BED/1BATH	\$1,625
2BED/1BATH	\$1,975
AMENITIES	COURTYARD

DESCRIPTION - OFF STREET  
PARKING



1441 28TH AVE N  
ST. PETERSBURG, FL

UNIT MIX	RENTS
2BED/1BATH	\$2,325
TOTAL UNITS	SFH
AMENITIES	PRVIATE PATIO

DESCRIPTION - OFF STREET  
PARKING



# THE HOMES ON JACKSON STREET ST. PETERSBURG, FL



## DEMOGRAPHICS

### Age

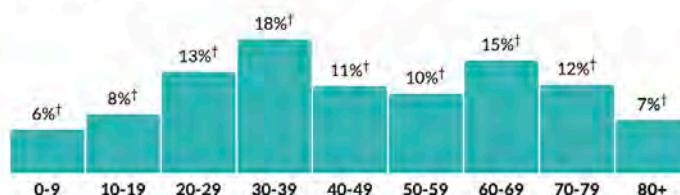
**44.5**

#### Median age

a little higher than the figure in the Tampa-St. Petersburg-Clearwater, FL Metro Area: 42.1

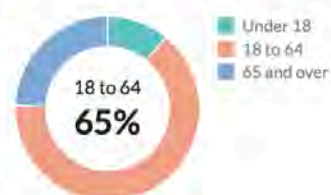
a little higher than the figure in Florida: 42.4

Population by age range



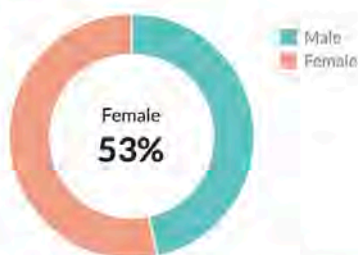
[Show data](#) / [Embed](#)

Population by age category



[Show data](#) / [Embed](#)

### Sex



[Show data](#) / [Embed](#)

### Race & Ethnicity



\* Hispanic includes respondents of any race. Other categories are non-Hispanic.

[Show data](#) / [Embed](#)

### Income

**\$61,579**

#### Per capita income

about 1.5 times the amount in the Tampa-St. Petersburg-Clearwater, FL Metro Area: \$39,605

about 1.5 times the amount in Florida: \$38,850

**\$65,058**

#### Median household income

a little less than the amount in the Tampa-St. Petersburg-Clearwater, FL Metro Area: \$67,197

a little less than the amount in Florida: \$67,917

Household income



[Show data](#) / [Embed](#)

### Poverty

**14.3%**

#### Persons below poverty line

about 10 percent higher than the rate in the Tampa-St. Petersburg-Clearwater, FL Metro Area: 12.6%

about 10 percent higher than the rate in Florida: 12.9%

Children (Under 18)



[Show data](#) / [Embed](#)

Seniors (65 and over)



[Show data](#) / [Embed](#)



Households

9,613

Number of households

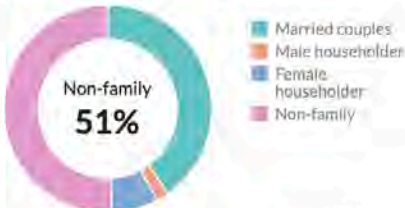
the Tampa-St. Petersburg-Clearwater, FL Metro Area: 1,281,240  
Florida: 8,353,441

1.7

Persons per household

about two-thirds of the figure in the Tampa-St. Petersburg-Clearwater, FL Metro Area: 2.5  
about two-thirds of the figure in Florida: 2.5

Population by household type



Show data / Embed

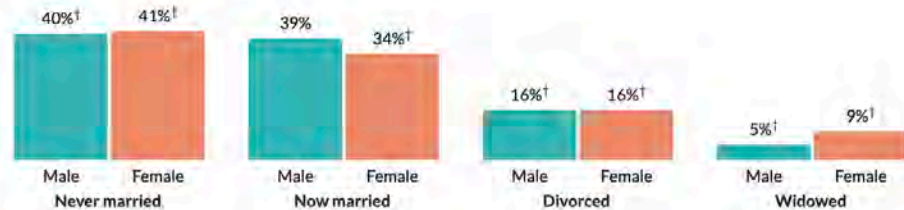
Marital status



\* Universe: Population 15 years and over

Show data / Embed

Marital status, by sex



Show data / Embed

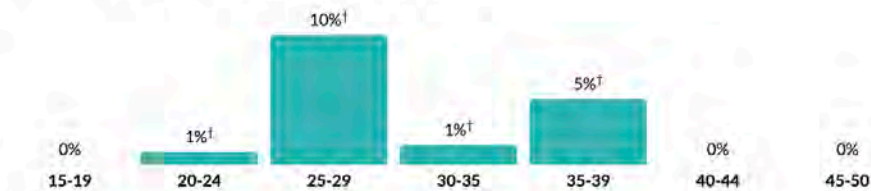
Fertility

3.1%

Women 15-50 who gave birth during past year

about two-thirds of the rate in the Tampa-St. Petersburg-Clearwater, FL Metro Area: 4.6%  
about two-thirds of the rate in Florida: 4.8%

Women who gave birth during past year, by age group



\* Universe: Women 15 to 50 years

Show data / Embed

# DEMOGRAPHICS

## Units & Occupancy

**13,092**

Number of housing units

the Tampa-St. Petersburg-Clearwater, FL Metro

Area: 1,471,328

Florida: 9,915,957

### Occupied vs. Vacant



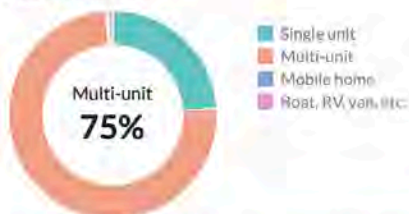
[Show data](#) / [Embed](#)

### Ownership of occupied units



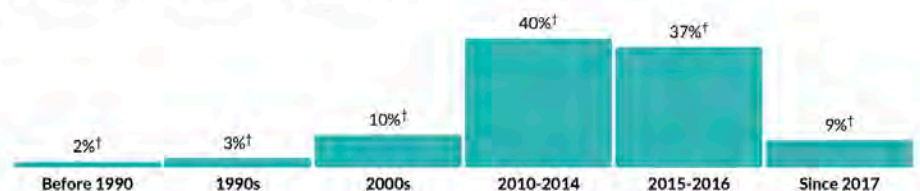
[Show data](#) / [Embed](#)

## Types of structure



[Show data](#) / [Embed](#)

## Year moved in, by percentage of population



[Show data](#) / [Embed](#)

## Value

**\$499,900**

Median value of owner-occupied housing units

nearly double the amount in the Tampa-St. Petersburg-Clearwater, FL Metro Area: \$273,000

more than 1.5 times the amount in Florida: \$292,200

### Value of owner-occupied housing units



[Show data](#) / [Embed](#)

## Geographical mobility

**25.5%**

Moved since previous year

more than 1.5 times the rate in the Tampa-St. Petersburg-Clearwater, FL Metro Area: 15.3%

more than 1.5 times the rate in Florida: 14.4%

### Population migration since previous year



[Show data](#) / [Embed](#)



Educational attainment

95.8%

High school grad or higher

a little higher than the rate in the Tampa-St. Petersburg-Clearwater, FL Metro Area: 90.6%

about 10 percent higher than the rate in Florida: 89.3%

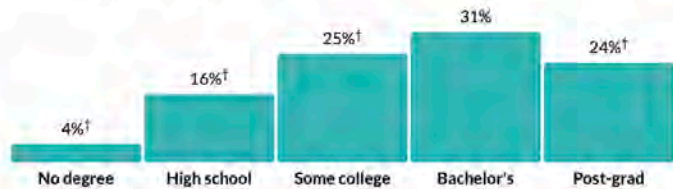
54.2%

Bachelor's degree or higher

more than 1.5 times the rate in the Tampa-St. Petersburg-Clearwater, FL Metro Area: 33.2%

more than 1.5 times the rate in Florida: 32.3%

Population by highest level of education



\* Universe: Population 25 years and over

[Show data](#) / [Entire](#)

Place of birth

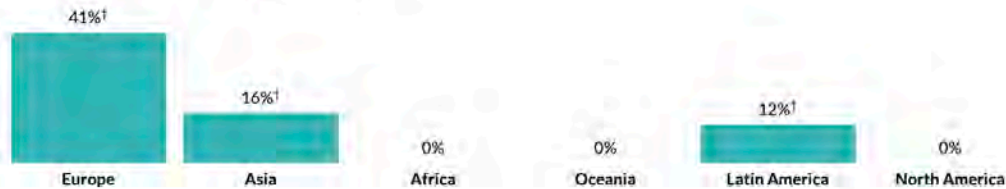
9.5%

Foreign-born population

about two-thirds of the rate in the Tampa-St. Petersburg-Clearwater, FL Metro Area: 14.7%

about half the rate in Florida: 21.1%

Place of birth for foreign-born population



[Show data](#) / [Entire](#)

Veteran status

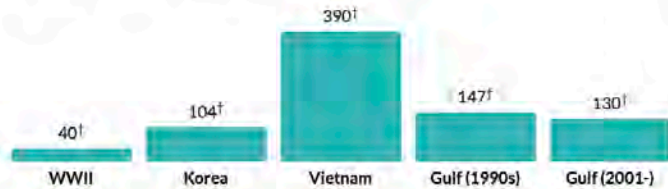
7.5%

Population with veteran status

about 80 percent of the rate in the Tampa-St. Petersburg-Clearwater, FL Metro Area: 8.9%

a little less than the rate in Florida: 7.9%

Veterans by wartime service



\* Civilian veterans who served during wartime only

[Show data](#) / [Entire](#)

1,156 Total veterans  
1,070 Male  
86 Female





CONTACTS:

**DUST.IN WEST.**

Associate

O: 727 287 9732

M: 727 434 4711

dustin@verdadcre.com

LIC: SL3565807

**JAMES VEST.AL**

Managing Broker

O: 727-748 0725

M: 727 424 9988

james@verdadcre.com

LIC: BK3220573

**VERDAD COMMERCIAL REAL EST.ATE SERVICES, LLC**

1944 N. Hercules Ave | Suite B | Clearwater, FL

[www.verdadcre.com](http://www.verdadcre.com)